

HOW TO GET STARTED

Call the Area Agency on Aging at the
Northwest Georgia Regional Commission
1-800-759-2963.

- A CCSP nurse will visit to assess medical and financial eligibility and develop a service plan.
- CCSP will develop an individualized plan of care for service that is coordinated with your physician to meet your individual needs.
- Your services will be brokered with state approved provider agencies.
- Department of Family and Children Services determines financial eligibility for CCSP Medicaid if you do not get Supplemental Security Income.
- Care Coordinators and RN staff schedule quarterly visits to your home to monitor service provision and perform annual re-certifications.
- Your personal physician will continue to direct your care.



Community Care Services Program Floyd County Board of Health Department of Community Health

In partnership with the
Department of Human Services



Public Health
Prevent. Promote. Protect.

To find additional information about services offered through CCSP visit our website at:

www.nwgapublichealth.org/programs/comcare

Located at
101 East Second Avenue
Suite 200
Rome, Georgia 30161

1-800-414-5221
or locally call
706-295-6654 or 706-802-5221

Community Care Services Program



Assists elderly and disabled
citizens to live in their home
and community under the
direction of their personal
physician.

CCSP SERVICES

PERSONAL SUPPORT SERVICES/EXTENDED (PSS/X)

PSS provides quality competent care to CCSP members in the form of personal care, housekeeping, home management, proper nutrition, medically-related activities, ambulation, and respite care to caregivers. Extended PSS (PSSX) provides personal support services over an extended period of time in a home setting which may also include relief of the person(s) normally providing care and/or oversight.

ADULT DAY HEALTH (ADH)

A community-based, medically-oriented day program that provides social, health, and rehabilitative services to individuals who are functionally impaired. ADH services increase opportunities for individuals to participate in multi-faceted activities, including social and cultural activities.

ALTERNATIVE LIVING SERVICES (ALS)

Family and group model homes with 24 hour supervision, medically-related personal care, nursing supervision, and health-related support services. Family homes are 2-6 beds. Group homes are 7-24 beds.

EMERGENCY RESPONSE SYSTEMS (ERS)

Monitors member safety and provides member access to emergency crisis intervention for medical or environmental emergencies. The electronic communication between the member and a central monitoring station provides services 24 hours a day, 7 days a week.

HOME DELIVERED MEALS (HDM)

HDM offer nutritious meals, nutrition education, screening, and counseling to CCSP clients. Meals are offered in frozen and/or shelf stable variety with hot meals available in most counties.

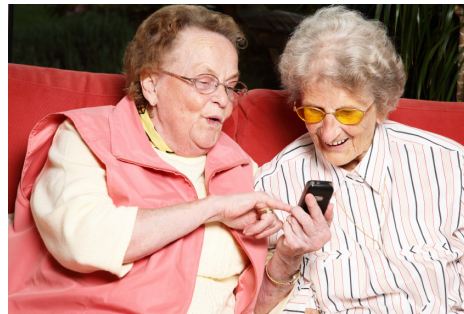
HOME DELIVERED SERVICES (HDS)

Skilled nursing, OT, PT, and ST renders services in type and frequency as ordered by the CCSP care coordinator under the direction of a physician. The agency adheres to standards related to record keeping, staff training, and general procedures outlined by DMA. CCSP clients may receive the first 50 visits by a home health agency prior to HDS care under CCSP.

CCSP EXTENDED OPTIONS

CD/PSS, Consumer Directed Option is set up for eligible clients or caregivers wanting to assume the role of employer of the aide performing personal support services. The employer acts as the employer of record and performs essential employer functions. CD/PSS supports client choice and independence and promotes increased client participation in care planning, budgeting, service delivery, and the freedom to hire, supervise and train aides.

MFP, Money Follows the Person is available as a transition program to work with CCSP eligible clients to increase the use of home and community based services rather than institutional long term care services. It is designed to eliminate barriers in state laws that restrict the flexible use of Medicaid funds to enable persons to receive support for long term services in a setting of their choice. Clients transition home with CCSP and MFP following a minimum 90 day nursing home stay for non-rehab purposes.



*No Age
Restrictions
For Participation
In CCSP*

YOU MAY QUALIFY FINANCIALLY IF:

- You receive Supplemental Security Income.
or
- You may qualify for CCSP Medicaid even if you do not receive SSI, (Supplemental Security Income), if your income and resources fall within MAO limits, (Medical Assistance Only). MAO participants share in the cost of their services based on their amount of income above the SSI limit.

INCOME LIMITS 2017

Individual	\$735 to \$2,205
<i>Couple income treated as two individuals</i>	
SSI Limits	Single \$735 Couple \$1,103

MAO RESOURCE LIMITS 2017

Single	\$2,000
Couple <i>(Both spouses in CCSP)</i>	\$3,000
Spousal Impoverishment Limit <i>(One spouse coming into CCSP)</i>	\$121,220
Spousal Diversion Limit	\$2,980.50
Medicare Deductible	\$109
ALS Personal Needs Allowance	
Single	\$115
Couple	\$218
ALS client with SS & SSI, personal needs allowance	\$135

**Department of Family and Children Services
determines financial eligibility for
CCSP Medicaid.**